



## Elkhart County Courthouse

101 N Main Street

Goshen, Indiana 46526

Location		Structural Inconsistencies		Recommended Corrections/Modifications to Provide Access	Technical Information			Finalized Actions		
Location	Photo	Identified Issue	ADAAG Specification		Priority Ranking and Justification	Improvement Cost	Funding Source	Finalized Correction	Anticipated Date of Completion	Date of Completion
1. Parking		No "Van Accessible" sign at van accessible parking space.	4.6.4	ADAAG requires accessible parking spaces to be located in each parking lot. Accessible parking spaces are required to have upright signage that includes the symbol of a accessibility and van accessible signage where required. <b>Add one "Van Accessible" sign.</b>	<b>L:</b> Space is adequate for vans, just no sign posted.	\$50	Elkhart County General Fund	<b>Sign added</b>		<b>Jul-14</b>
2. Doors	1, 2	Door handles exceed maximum height of 48 inches and are not operable with a closed fist.	4.13.9	ADAAG requires rest room door handles, pulls, latches, locks, and other operating devices on accessible doors to have a shape that is easy to grasp with one hand and does not require tight grasping, tight pinching, or twisting orf the wrist to operate. Hardware required for accessible door passage shall be mounted no higher than 48 inches above finished floor. <b>Lower door handles. Replace inaccessible knobs or latches with lever or loop handles.</b>	<b>H:</b> Marjority of customers use the door handles. The goal is to provide service. (rated very high by advisory committee)	\$1,500	Elkhart County General Fund	<b>Historic</b>		
3. Directional and Informational Signage	3	Signage mounted above 80 inches does not have letters at least 3 inches high. Current letter size is 1 1/2 inches.	4.30.3	ADAAG requires a minimum character height of 3 inches for signs at least 80 inches above the ground. <b>Review requirements and replace signs as needed.</b>	<b>M:</b> Majority of customers depend on these signs. The goal is to provide service. Advisory committee noted that white on black is the best for low vision.	\$2,000	Elkhart County General Fund	<b>Historic</b>		

Location		Structural Inconsistencies		Recommended Corrections/Modifications to Provide Access	Technical Information			Finalized Actions		
Location	Photo	Identified Issue	ADAAG Specification		Priority Ranking and Justification	Improvement Cost	Funding Source	Finalized Correction	Anticipated Date of Completion	Date of Completion
4. Seats, Tables, Counters	4	Tops of table or counters are not between 28 and 34 inches high. Currently 41 inches high.	4.32.4	ADAAG requires the tops of accessible tables and counters shall be from 28 inches to 34 inches above the finish floor or ground. <b>Lower part or all of high surface.</b>	<b>L:</b> Table tops in meeting facilities can usually be moved around to accommodate most	\$10,000	Elkhart County General Fund			
5. Counters	5	Portion of main counter exceeds maximum height of 36 inches. Some are lower height but can come around also.	7.2	ADAAG requires a portion of the main counter with a maximum height of 36 inches. <b>Lower section of counter. Arrange counter and surrounding furnishings to create a space to hand items back and forth.</b>	<b>M:</b> Most counters can be walked around but some in tight spaces where a lower portion is needed.	\$5,000	Elkhart County General Fund			
6. Elevators	6	Call buttons in the hallway are higher than the maximum height of 42 inches. Currently 55 inches above the floor.	4.10.3	ADAAG requires call buttons in elevator lobbies and halls shall be centered at 42 inches above the floor. <b>Lower call buttons. Provide a permanently attached reach stick.</b>	<b>H:</b> A large percentage of residents using the elevator are doing so because they are restricted to a wheelchair and can not reach higher than the designed height	\$5,000	Elkhart County General Fund			

Location		Structural Inconsistencies		Recommended Corrections/Modifications to Provide Access	Technical Information			Finalized Actions		
Location	Photo	Identified Issue	ADAAG Specification		Priority Ranking and Justification	Improvement Cost	Funding Source	Finalized Correction	Anticipated Date of Completion	Date of Completion
7. Elevators	7	No sign on both door jambs identifying the floor in raised letters and braille.	4.10.5	ADAAG requires all elevator hoistway entrances shall have raised and Braille floor designations provided on both door jambs. <b>Install tactile signs to identify floor numbers, at a height of 60 inches from floor.</b>	<b>M:</b> Visually disabled residents may be more inclined to use an elevator. Braille would be necessary.	\$5,000	Elkhart County General Fund			
8. Elevators	8	Emergency intercom is not usable without voice communication. Emergency intercom is not identified by braille and raised letters.	4.10.14	ADAAG requires Emergency system shall be identified by a raised symbol and lettering complying with 4.30 (Signage) and located adjacent to device. System shall not require voice communication. <b>Modify communication system and add tactile identification.</b>	<b>M:</b> Visually disabled residents may be more inclined to use an elevator. Braille would be necessary.	\$2,000	Elkhart County General Fund			

Location		Structural Inconsistencies		Recommended Corrections/Modifications to Provide Access	Technical Information			Finalized Actions		
Location	Photo	Identified Issue	ADAAG Specification		Priority Ranking and Justification	Improvement Cost	Funding Source	Finalized Correction	Anticipated Date of Completion	Date of Completion
9. Doorways and Passages	9	Pictograms or symbols are not used to identify rest rooms. Doors are not equipped with accessible handles (operable with a closed fist).	4.30.4 4.13.9	ADAAG requires that pictograms shall be accompanied by the equivalent verbal description placed directly below the pictogram. Pictogram shall also include braille and raised letters. Rest room door handles, pulls, latches, locks, and other operating devices on accessible doors to have a shape that is easy to grasp with one hand and does not require tight grasping, tight pinching, or twisting of the wrist to operate. <b>Add proper symbols with supplementary verbal signage with raised characters and braille below pictogram symbol. Replace knobs or latches with lever or loop handles.</b>	<b>H:</b> Marjority of people in courthouse will need to use the restroom. Pictures, braille, and accessible handles are crucial in this building for rest rooms.	\$1,000	Elkhart County General Fund			
10. Lavatories	10	Lavatory does not meet minimum distance of 29 inches from floor to bottom of lavatory apron. Currently at 26 inches.	4.19.2	ADAAG requires lavatories shall be mounted with the rim or counter surface no higher than 34 inches and provide a clearance of at least 29 inches above finish floor to bottom of the apron. <b>Adjust or replace lavatory.</b>	<b>M:</b> Only one lavatory in each location would need to be adjusted. A wheel chair may not be able to fit underneath	\$5,000	Elkhart County General Fund		2017	

Location		Structural Inconsistencies		Recommended Corrections/Modifications to Provide Access	Technical Information			Finalized Actions		
Location	Photo	Identified Issue	ADAAG Specification		Priority Ranking and Justification	Improvement Cost	Funding Source	Finalized Correction	Anticipated Date of Completion	Date of Completion
11. Lavatories	10	Faucet is not operable with one closed fist.	4.15.4 4.27.4	ADAAG requires controls and operating mechanisms to be operable with one hand and shall not require tight grasping, pinching, or twisting of the wrist. <b>Replace with paddle handles.</b>	<b>M:</b> Only one lavatory in each location would need to be adjusted. Resident may not be able to wash without this adjustment.	\$500	Elkhart County General Fund		<b>2017</b>	
12. Telephones	11	Location of the text telephone is not identified by accessible signage bearing the International TDD symbol.	4.30.7	ADAAG requires text telephones shall be identified by the international TTY symbol. <b>Add signage.</b>	<b>L:</b> This information could easily be provided by an employee.	\$50	Elkhart County General Fund	<b>Removed</b>		<b>2016</b>



01.Courthouse Front Entrance



02.Courthouse Interior Door



03. Courthouse Interior

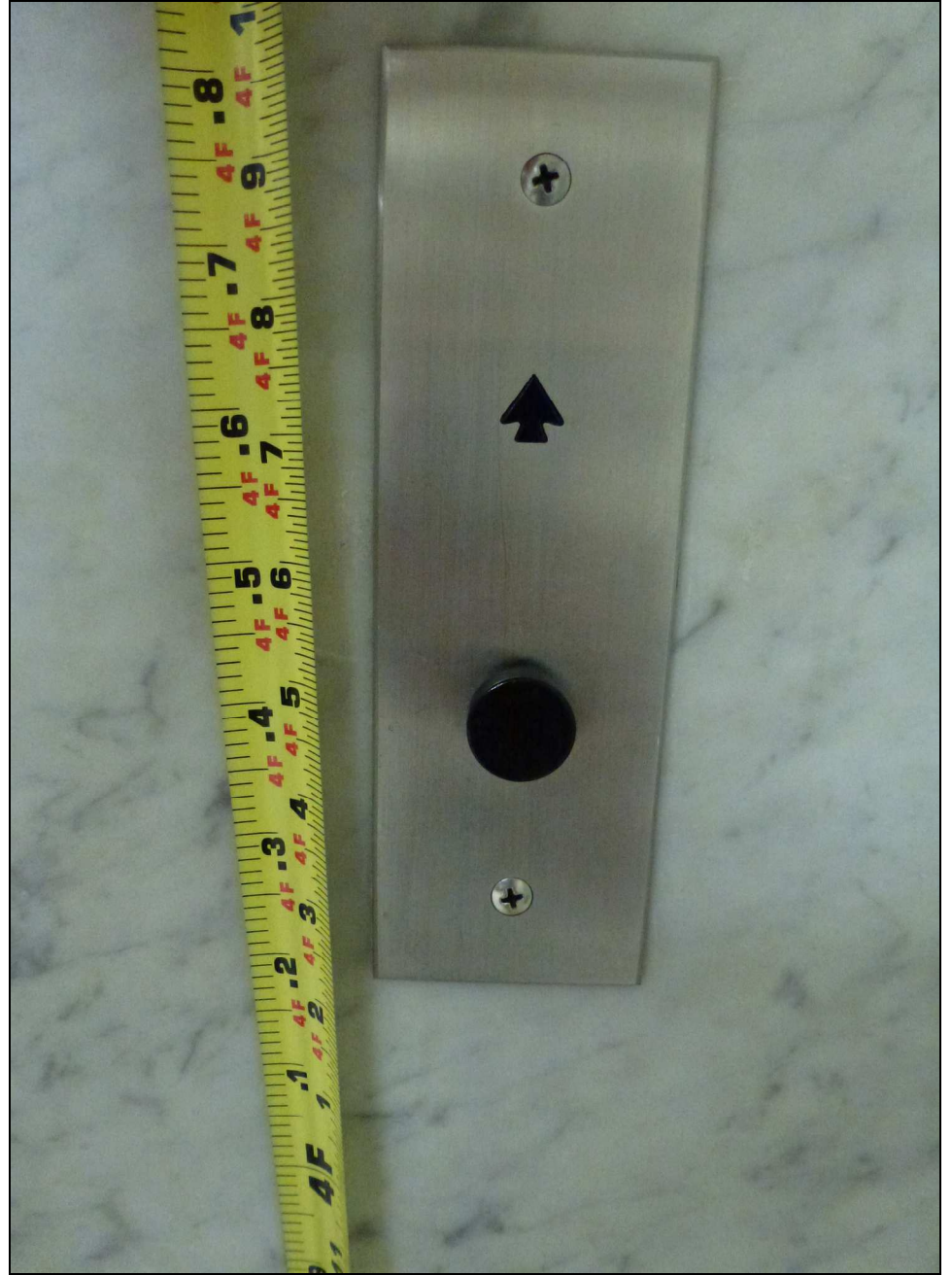


04. Courthouse Office





05. Courthouse Counter



06. Courthouse Elevator Button



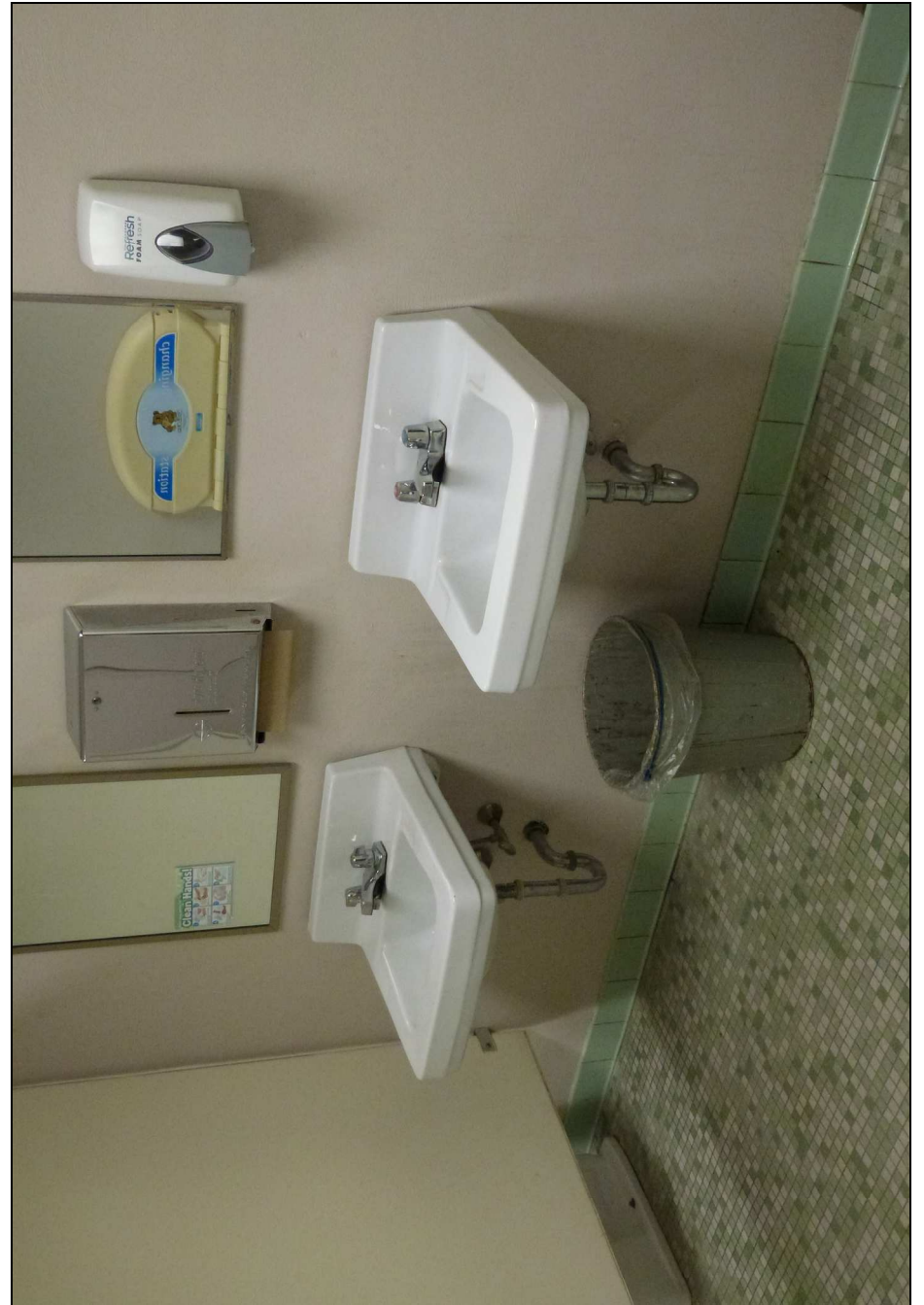
07. Courthouse Elevator



08. Emergency Intercom



09.Courthouse Restroom Entrance



10. Courthouse Restroom



11.Courthouse Telephone