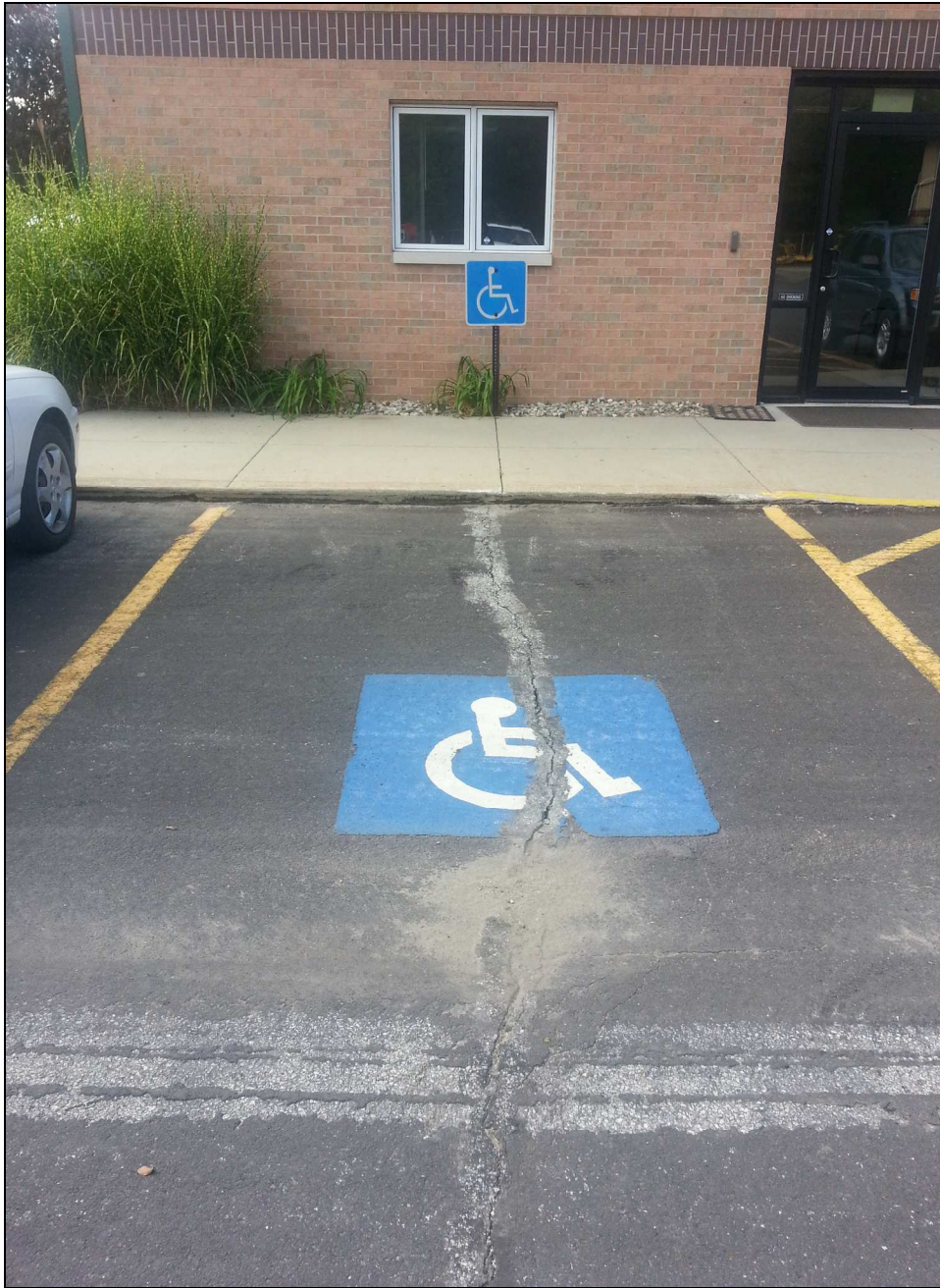


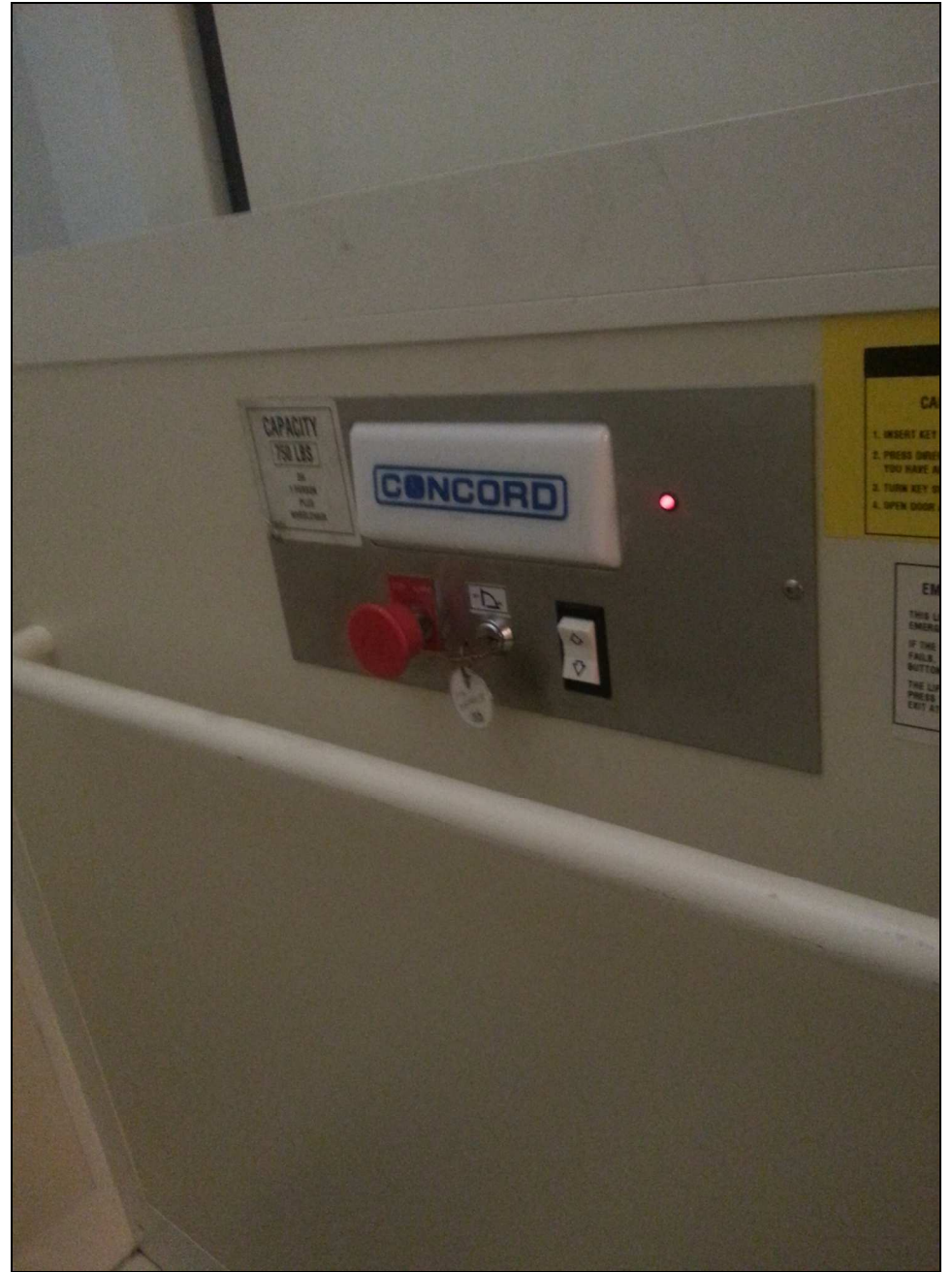


Highway Department
610 Steury Avenue
Goshen, Indiana 46528

Location		Structural Inconsistencies		Recommended Corrections/Modifications to Provide Access	Technical Information			Finalized Actions		
Location	Photo	Identified Issue	ADAAG Specification		Priority Ranking and Justification	Improvement Cost	Funding Source	Finalized Correction	Anticipated Date of Completion	Date of Completion
1. Parking	1	No "Van Accessible" sign at van accessible parking space. No enforcement procedure for accessible parking	4.1.2(1b)	ADAAG requires accessible parking spaces to be located in each parking lot. Accessible parking spaces are required to have upright signage that includes the symbol of a accessibility and van accessible signage where required. Add one "Van Accessible" sign. Enforce parking regulations.	L: No record of customer needing the Van Accessible space	\$50	Elkhart General Fund		2023	
3. Front Counter	3	Front counter top exceeds the maximum height. The counter top is 38" high.	7.2	ADAAG requires sale and service counters to have a maximum height of 36" above the finished floor. Lower portion of counter or provide auxiliary counter at 36" height.	M: Majority of customers use only this counter	\$2,000	Elkhart General Fund			
4. Elevator	2	No visible and verbal or audible door opening/closing and floor indicators. No raised and braille lettering on controls inside.	4.10	ADAAG requires visible and audible signals at each hoistway entrance to indicate when the car is answering a call. All control buttons shall be designated by Braille and by raised standard alphabet characters for letters, Arabic characters for numerals, or standard symbols. Add audible door signals. Add controls with braille and raised letters.	L: Elevator is rarely used and when it is, employee assists.	\$2,000	Elkhart General Fund	No Longer in Use	2022	



1. Highway Van Parking



2. Highway Elevator



3. Highway Counter